

TIMAH INTERNATIONAL INVESTMENT

The background of the page is composed of several large, overlapping geometric shapes. A prominent feature is a diagonal line running from the top-left towards the bottom-right. This line is divided into segments of different colors: a bright orange segment at the top-left, a darker brownish-orange segment, a light grey segment, a dark grey segment, and a white segment at the bottom-right. The overall composition is modern and minimalist.



Eaton Aeroquip® Hydraulic Hose and Fittings Stock



Hydraulic Motors & Pumps

Char-Lynn®

Known for their quality and performance, these highly cost-effective, industry leading products are widely used by original equipment manufacturers in a broad range of industrial and consumer vehicles and equipment. Char-Lynn products are available worldwide through the Eaton distributor network.

Medium Pressure Motor



High Pressure Motor



Low Pressure Motor

Hydrokraft®

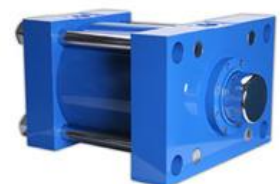
Eaton's Hydrokraft® axial piston pumps and motors are designed for demanding industrial environments including steel mills, chemical processing, metalworking, offshore, marine, and oilfield applications. Built with the industry's largest available shaft bearings to handle full thru-drive applications, Hydrokraft motors deliver both high performance and extended life. Hydrokraft brand pumps and motors offer a wide range of optional controls, plus the ability to operate on a variety of fluids including water glycol.



Vickers®

Vickers®, one of the most experienced and respected names in hydraulics, became part of Eaton in 1999. A comprehensive supplier of power and motion control components and systems, Vickers vane and piston pumps, valves, electro-hydraulic controls, cylinders and filtration products are found in industrial, mobile, aerospace, marine and defense applications worldwide.

EH Series Electrohydraulic Cylinder



G Series - Large Tie Rod

Other Instruments & Accessories



Nothing on the list? Let us know what product or service you need